



GMT MONTHLY MEMBERSHIP PROGRESS REPORT

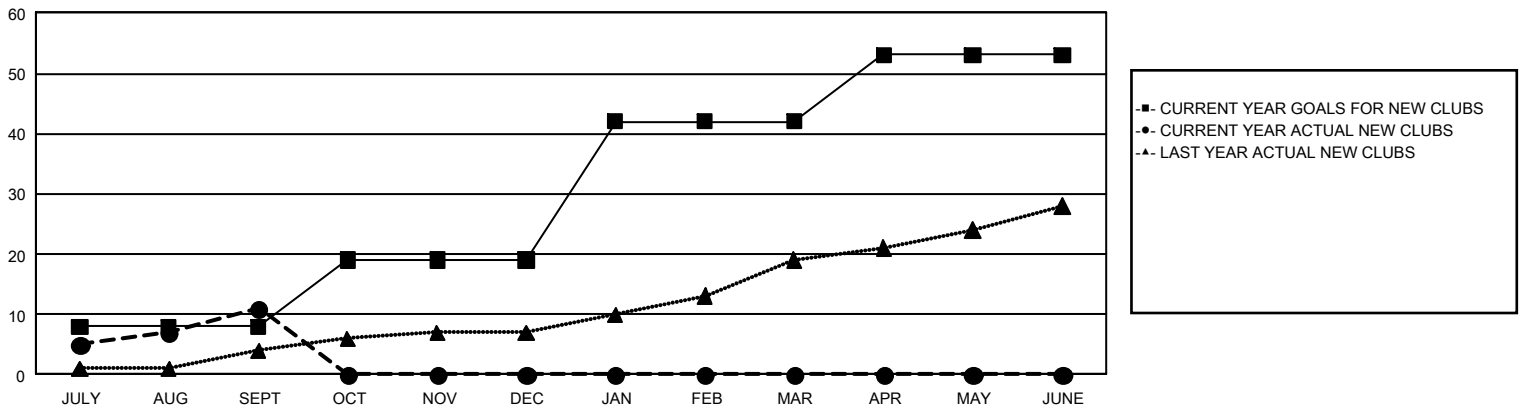
GAT Constitutional Area 5 - Japan

Results as of: 9/30/2025

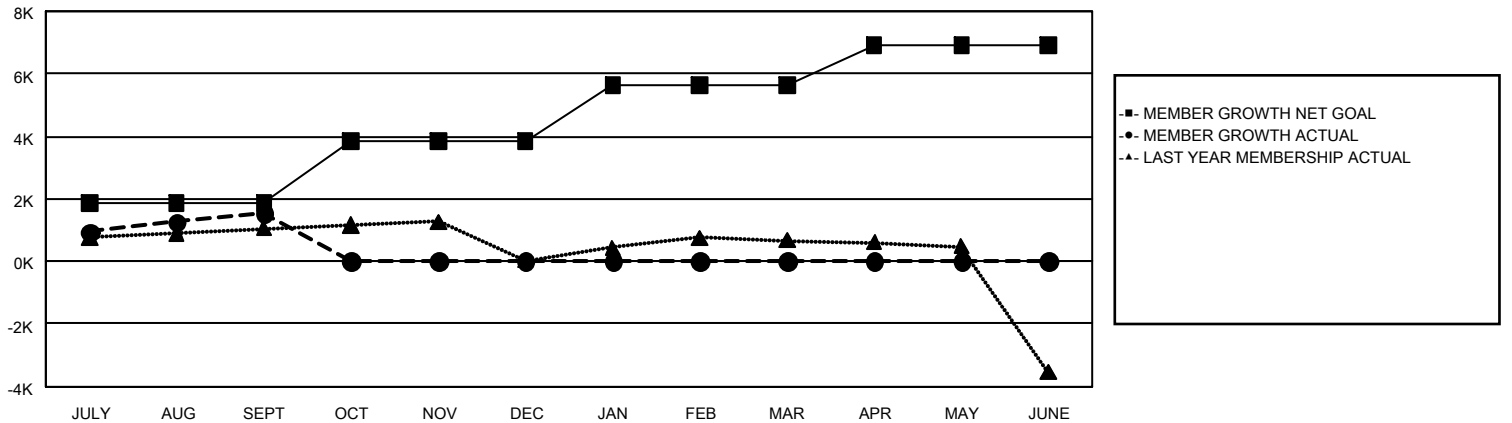
REPORT DOES NOT INCLUDE CLUBS IN UNDISTRICTED AREAS.

Clubs				Members			
RESULTS FOR 2025-2026				RESULTS FOR 2025-2026			
QUARTER	NEW CLUB GOAL	NEW CLUBS	DROPPED CLUBS	QUARTER	MEMBER GROWTH NET GOAL	MEMBER GROWTH ACTUAL	DROPPED MEMBERS ACTUAL (including transfers)
JULY/AUG/SEPT	8	11	4	JULY/AUG/SEPT	1,850	3,299	1,493
OCT/NOV/DEC	11	0	0	OCT/NOV/DEC	1,994	0	0
JAN/FEB/MAR	23	0	0	JAN/FEB/MAR	1,787	0	0
APR/MAY/JUNE	11	0	0	APR/MAY/JUNE	1,271	0	0

GOALS AND ACTUAL NEW CLUBS CUMULATIVE



GOALS AND ACTUAL MEMBERS CUMULATIVE



DROPPED CLUBS: 4

1,214 CLUBS OF 2,662 ADDED 1 OR MORE NEW MEMBERS

GENDER DISTRIBUTION

MALE 70,777 (77.35%)
FEMALE 20,709 (22.63%)

DROPPED MEMBERS

DECEASED	150
CLUB CANCELLED	3
OTHER	1,332
TOTAL	1,485

[CLICK HERE FOR CUMULATIVE MEMBERSHIP DATA](#)

TOTAL FAMILY UNIT MEMBERS	24,738
FAMILY MEMBERS PAYING HALF DUES	13,732